

"THE PLANS AND PERMIT SET ARE DERIVED FROM AND CONSISTENT WITH THE PLANS AND SPECIFICATIONS ASSOCIATED WITH THIS APPROVAL ON FILE WITH THE DIVISION AND THIS CONDITIONAL APPROVAL LETTER."

TO THE BEST OF MY KNOWLEDGE, BELIEF, AND PROFESSIONAL JUDGEMENT, THESE PLANS (AND SPECIFICATIONS) ARE IN COMPLIANCE WITH THE E.C.C.C.N.Y.S., 2002 EDITION. COMPLIANCE IS DETERMINED BY THE USE OF MECHECK, COMPUTER SOFTWARE DEVELOPED BY DOE, AND CONFORMANCE TO THE GENERAL PROVISIONS OF CHAPTER 5, SECTIONS 502, 503, 504, 505. INDIVIDUAL (DISCRETE) MODEL PLANS DERIVED FROM THE SYSTEM AND SUBMITTED TO THE LOCAL CODE ENFORCEMENT OFFICIAL IN THE CONNECTION WITH BUILDING PERMIT APPLICATION SHALL BE ACCOMPLISHED BY A MECHECK REPORT.

24'-0" OF OPEN RIDGE BUILDER TO COVER REST OF ROOF WITH TAR PAPER INSTALL OVERHANG BLOCKS & EXTENSIONS



2848 - CAPE
FRONT ELEVATION

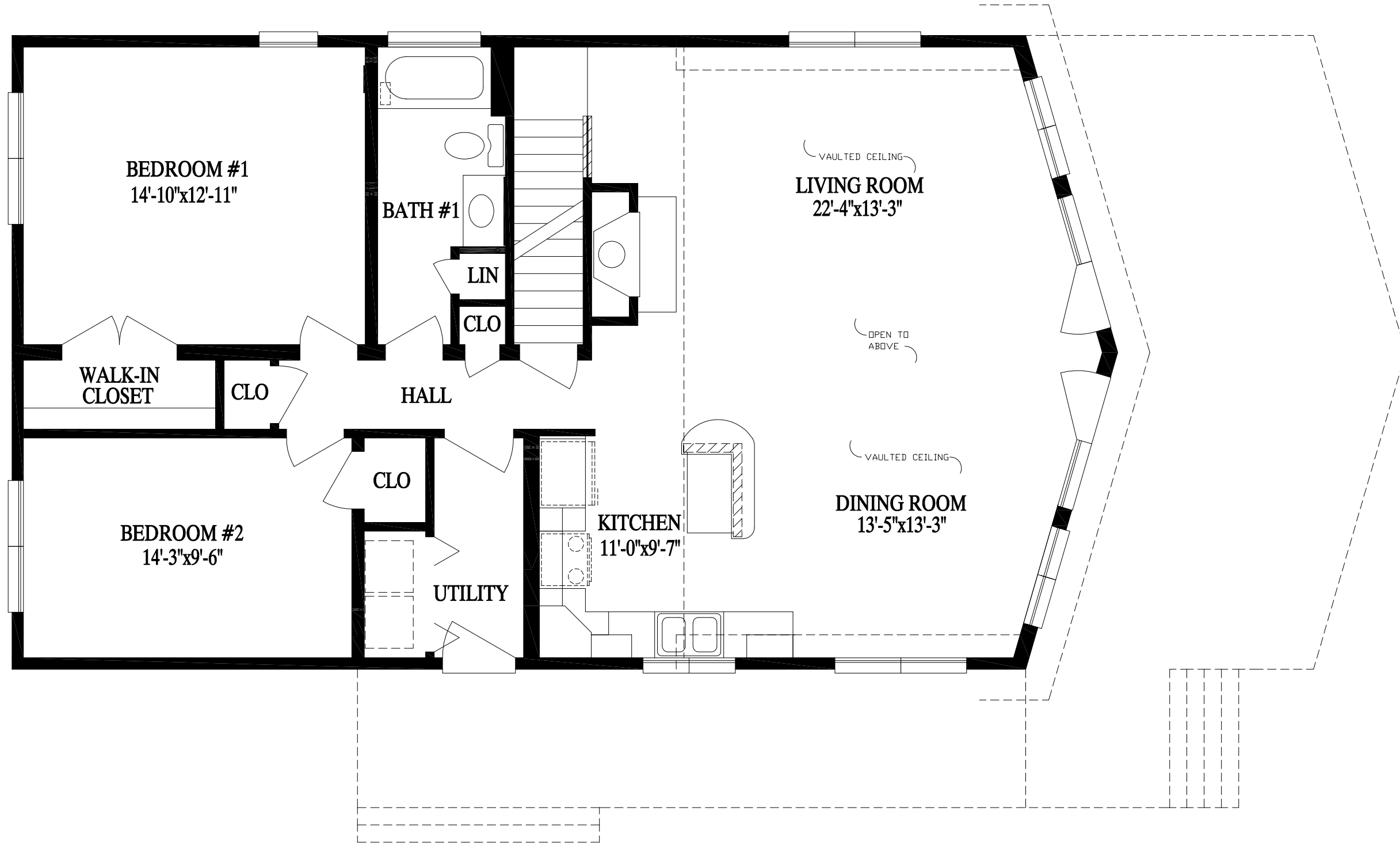
BUILDER		CUSTOMER	
CITY	COUNTY	STATE	NEWMAN
PULASHI	OSWEGO	NY	
WIND SPEED	WIND LOAD	SNOW LOAD	70
90 3SEC GUST	SEE CALCS	MAN	
ORDER NO.	SERIAL NO.	FILE NO.	
23409	10980	P23409(630)	

72 EAST MARKET STREET
P.O. BOX 219
MIDDLEBURG, PA. 17842
PHONE: (570) 837-1424
FAX: (570) 837-6133



DATE:	DRAWN BY:	STATUS:
5/22/2006	PIB	PRELIM
9/20/2006	PIF	REV. PRELIM
11/27/2006	CLP	REV. PRELIM
1/12/2007	PIF	FINAL
1/16/2007	CLP	APPROVAL
2/23/2007	PIF	REV. FINAL
3/30/07 & 4/1/07	HLB	P.A. & PURCHASING
4/17/2007	PSS	PRODUCTION

THIS PRINT HAS BEEN EXTRACTED FROM A SET OF A PREVIOUSLY APPROVED SYSTEM OR A MODEL APPROVAL AND IS ON FILE WITH STATE AND IS OK TO BE BUILT



TO THE BEST OF MY KNOWLEDGE, BELIEF, AND PROFESSIONAL JUDGEMENT, THESE PLANS (AND SPECIFICATIONS) ARE IN COMPLIANCE WITH THE E.C.C.N.Y.S., 2002 EDITION. COMPLIANCE IS DETERMINED BY THE USE OF MECHECK, COMPUTER SOFTWARE DEVELOPED BY DOE, AND CONFORMANCE TO THE GENERAL PROVISIONS OF CHAPTER 5, SECTIONS 502, 503, 504, 505, INDIVIDUAL (DISCRETE) MODEL PLANS DERIVED FROM THE SYSTEM AND SUBMITTED TO THE LOCAL CODE ENFORCEMENT OFFICIAL IN THE CONNECTION WITH BUILDING PERMIT APPLICATION SHALL BE ACCOMPLISHED BY A MECHECK REPORT.

THE PLANS AND PERMIT SET ARE DERIVED FROM AND CONSISTENT WITH THE PLANS AND SPECIFICATIONS ASSOCIATED WITH THIS APPROVAL ON FILE WITH THE DIVISION AND THIS CONDITIONAL APPROVAL LETTER.

THIS PRINT HAS BEEN EXTRACTED FROM A SET OF A PREVIOUSLY APPROVED SYSTEM OR A MODEL APPROVAL AND IS ON FILE WITH STATE AND IS OK TO BE BUILT

DATE:	DRAWN BY:	STATUS:
5/22/2006	PIB	PRELIM
9/20/2006	PIF	REV. PRELIM
11/27/2006	CLP	REV. PRELIM.
1/12/2007	PIF	FINAL
1/16/2007	CLP	APPROVAL
2/23/2007	PIF	REV. FINAL
3/30/07 & 4/1/07	HLB	P.A. & PURCHASING
4/17/2007	PSS	PRODUCTION

2848 - CAPE

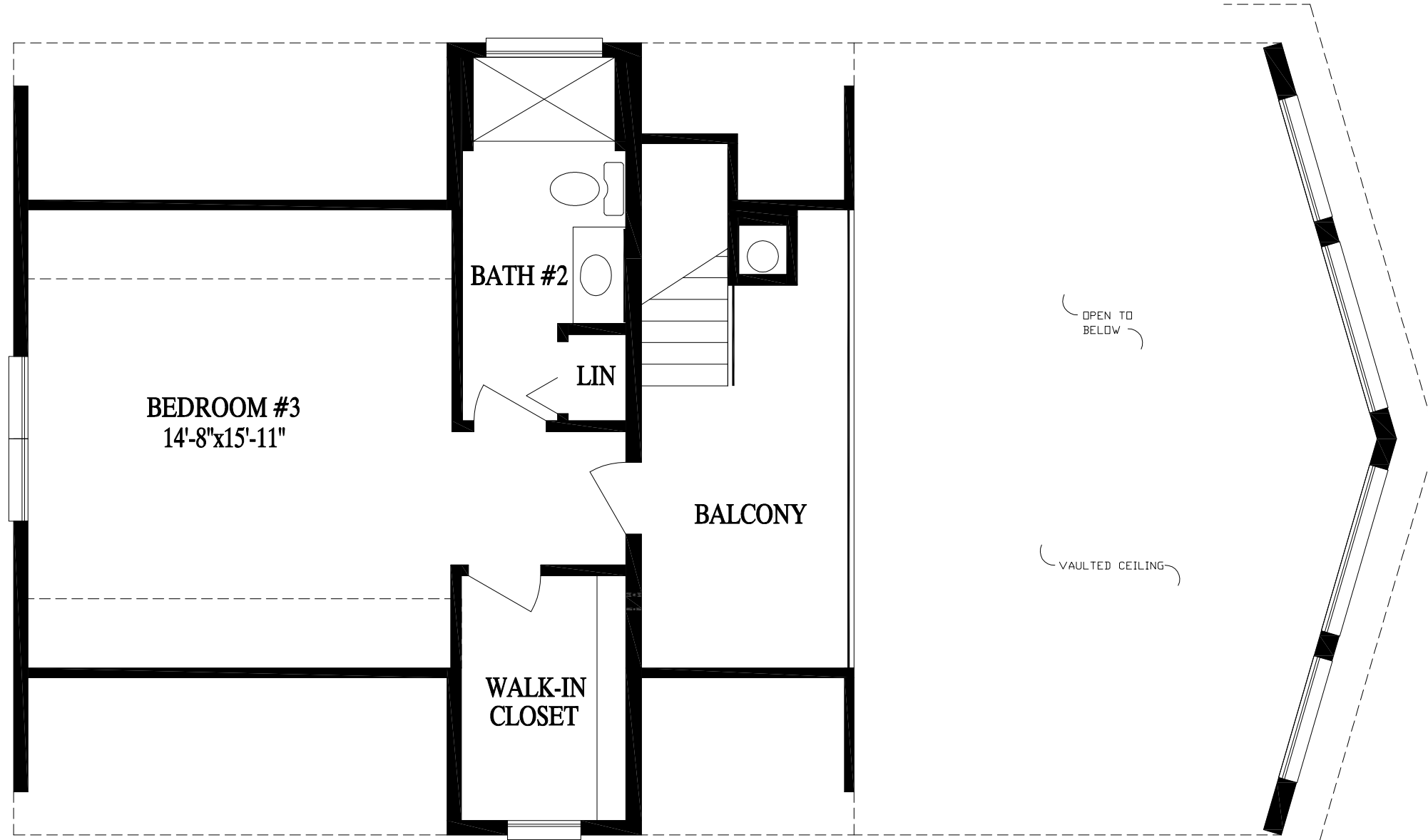
Professional Building Systems, Inc.

72 EAST MARKET STREET
P.O. BOX 219
MIDDLEBURG, PA. 17842
PHONE: (570) 837-1424
FAX: (570) 837-6133

BUILDER		FURDI'S		CUSTOMER	
CITY	COUNTY	CITY	COUNTY	NAME	STATE
PULASHI	OSWEGO	PULASHI	OSWEGO	NEWMAN	NY
WIND SPEED 90 3SEC GUST	WIND LOAD SEE CALCS	WIND LOAD SEE CALCS	MAN	SNOW LOAD 70	
ORDER NO. 23409	SERIAL NO. 10980	FILE NO. P23409(630)			

PAGE:

X



THIS PRINT HAS BEEN EXTRACTED FROM A SET OF A PREVIOUSLY APPROVED SYSTEM OR A MODEL APPROVAL AND IS ON FILE WITH STATE AND IS OK TO BE BUILT

X _____

PAGE:	DATE:		DRAWN BY:		STATUS:	
	5/22/2006	PIB	PIB	PRELIM	PRELIM	
	9/20/2006	PIF	PIF	REV. PRELIM	REV. PRELIM	
	11/27/2006	CLP	CLP	REV. PRELIM	REV. PRELIM	
	1/12/2007	PIF	PIF	FINAL	FINAL	
	1/16/2007	CLP	CLP	APPROVAL	APPROVAL	
	2/23/2007	PIF	PIF	REV. FINAL	REV. FINAL	
	2/30/07 & 4/11/07	HLB	HLB	P.A. & PURCHASING	P.A. & PURCHASING	
	4/17/2007	PSS	PSS	PRODUCTION	PRODUCTION	
<p>2848 - CAPE</p> <p>P PROFESSIONAL BUILDING SYSTEMS, INC.  72 EAST MARKET STREET P.O. BOX 219 MIDDLEBURG, PA. 17842 PHONE: (570) 837-1424 FAX: (570) 837-6133</p>						
BUILDER			FURDI'S		CUSTOMER	
CITY			COUNTY		STATE	
PULASHI			OSWEGO		NEWMAN	
WIND SPEED			WIND LOAD		SNOW LOAD	
90 3SEC GUST			SEE CALCS MAN		NY	
ORDER NO.			SERIAL NO.		FILE NO.	
23409			10980		P23409(630)	