

TO THE BEST OF MY KNOWLEDGE, BELIEF, AND PROFESSIONAL JUDGEMENT, THESE PLANS (AND SPECIFACATIONS) ARE IN COMPLIANCE WITH THE E.C.C.C.N.Y.S., 2002 EDITION. COMPLIANCE IS DETERMINED BY THE USE OF MECHECK, COMPUTER SOFTWARE DEVELOPED BY DOE, AND CONFORMANCE TO THE GENERAL PROVISIONS OF CHAPTER 5, SECTIONS 502, 503, 504, 505. INDIVIDUAL (DISCRETE) MODEL PLANS DERIVED FROM THE SYSTEM AND SUBMITTED TO THE LOCAL CODE ENFORCEMENT OFFICIAL IN THE CONNECTION WITH BUILDING PERMIT APPLICATION SHALL BE ACCOMPLISHED BY A MECHECK REPORT.

INSTALL ROOF EXTENSIONS  
INSTALL OVERHANG BLOCKS

20'-0" OF OPEN RIDGE BUILDER TO COVER  
REST OF ROOF WITH TAR PAPER

"THE PLANS AND PERMIT SET ARE DERIVED FROM AND CONSISTENT WITH THE PLANS AND SPECIFICATIONS ASSOCIATED WITH THIS APPROVAL ON FILE WITH THE DIVISION AND THIS CONDITIONAL APPROVAL LETTER."



SHIPLOOSE SOFFIT & FASCIA

PORCH OVERHANG SUPPLIED BY PBS.  
PORCH SLAB, POSTS AND RAILINGS  
FOR PORCH TO BE SUPPLIED AND  
INSTALLED ON-SITE BY OTHER

BUILDER	FURDI'S		CUSTOMER	
	CITY	COUNTY	STATE	RODE
STERLING	CAYUGA	NY		
WIND SPEED	WIND LOAD	SNOW LOAD		
90 3 SEC GUST	SEE CALS MAN.			
ORDER NO.	SERIAL NO.	FILE NO.		
16405	9330	P16405(130)		

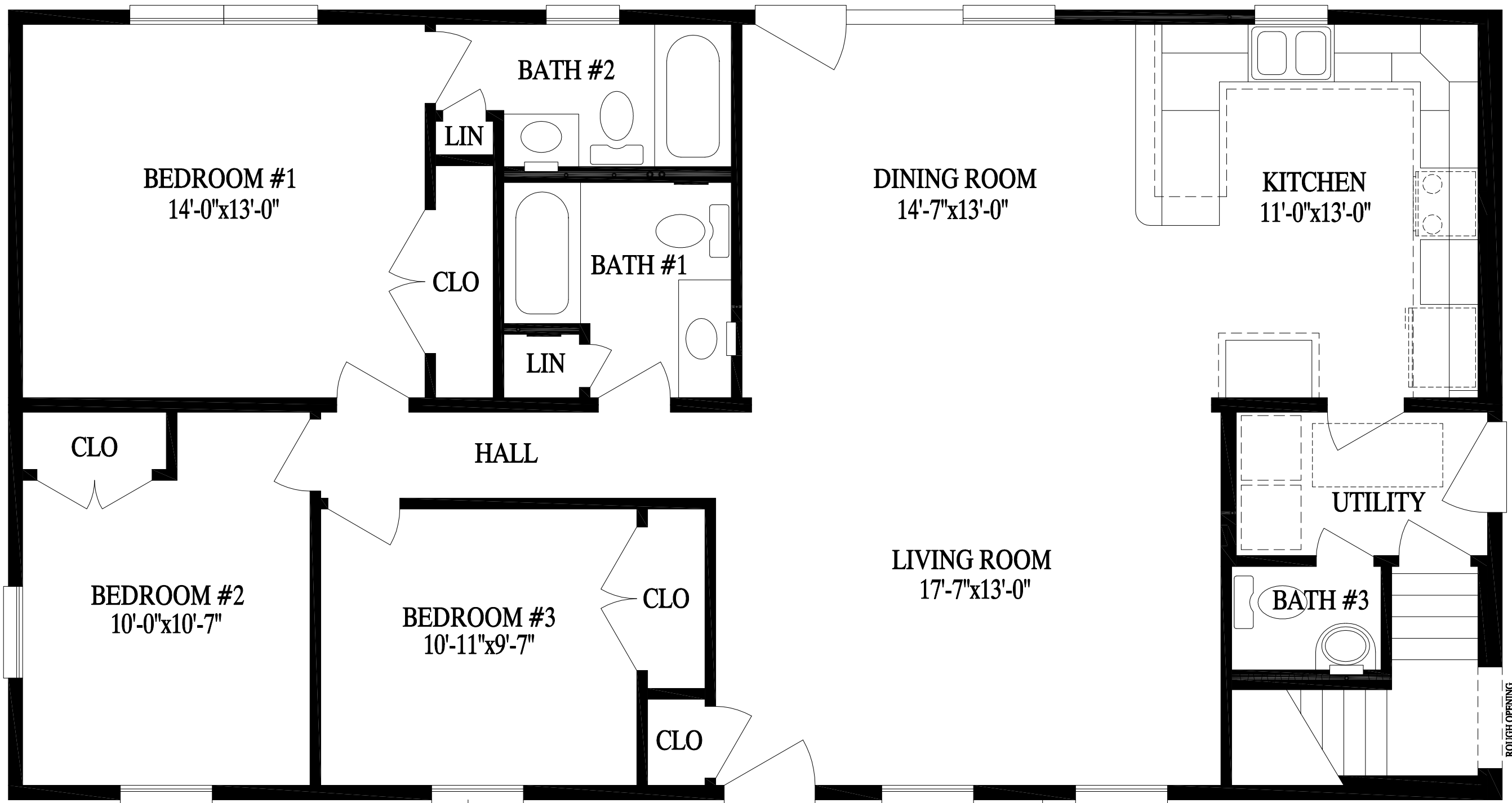
2852- RANCH	
FRONT ELEVATION	
72 EAST MARKET STREET P.O. BOX 219 MIDDLEBURG, PA. 17842 PHONE: (570) 837-1424 FAX: (570) 837-6133	

DATE:	5/19/04	STATUS:	S.T.F.
DRAWN BY:	KMC	APPROVAL	
	ALA	P.A.	
	HLB	PURCHASING	
	HLB	PRODUCTION	
	JC		

PAGE:	2.1
-------	-----

THIS PRINT HAS BEEN EXTRACTED FROM A SET OF A PREVIOUSLY APPROVED SYSTEM OR A MODEL APPROVAL AND IS ON FILE WITH STATE AND IS OK TO BE BUILT

X \_\_\_\_\_



CUSTOMER		RODE	
BUILDER	FURDI'S	STATE	NY
CITY	STERLING	COUNTY	CAYUGA
WIND SPEED	90	WIND LOAD	SEE CALS MAN.
ORDER NO.	16405	SEC	3
SERIAL NO.	9330	GUST	SEE CALS MAN.
FILE NO.	P16405(130)	SNOW LOAD	55

**2852- RANCH**

72 EAST MARKET STREET  
P.O. BOX 219  
MIDDLEBURG, PA. 17842  
PHONE: (570) 837-1424  
FAX: (570) 837-6133

**PROFESSIONAL BUILDING SYSTEMS, INC.**

DATE:	5/19/04	STATUS:	S.T.F.
DRAWN BY:	KMC	APPROVAL	
	ALA	P.A.	
	HLB	PURCHASING	
	HLB	PRODUCTION	
	JC		

TO THE BEST OF MY KNOWLEDGE, BELIEF, AND PROFESSIONAL JUDGEMENT, THESE PLANS (AND SPECIFACATIONS) ARE IN COMPLIANCE WITH THE I.E.C.C.C.N.Y.S., 2002 EDITION. COMPLIANCE IS DETERMINED BY THE USE OF MECCHECK, COMPUTER SOFTWARE DEVELOPED BY DOE, AND CONFORMANCE TO THE GENERAL PROVISIONS OF CHAPTER 5, SECTIONS 502, 503, 504, 505. INDIVIDUAL (DISCRETE) MODEL PLANS DERIVED FROM THE SYSTEM AND SUBMITTED TO THE LOCAL CODE ENFORCEMENT OFFICIAL IN THE CONNECTION WITH BUILDING PERMIT APPLICATION SHALL BE ACCOMPLISHED BY A MECCHECK REPORT.

"THE PLANS AND PERMIT SET ARE DERIVED FROM AND CONSISTENT WITH THE PLANS AND SPECIFICATIONS ASSOCIATED WITH THIS APPROVAL ON FILE WITH THE DIVISION AND THIS CONDITIONAL APPROVAL LETTER."

THIS PRINT HAS BEEN EXTRACTED FROM A SET OF A PREVIOUSLY APPROVED SYSTEM OR A MODEL APPROVAL AND IS ON FILE WITH STATE AND IS OK TO BE BUILT