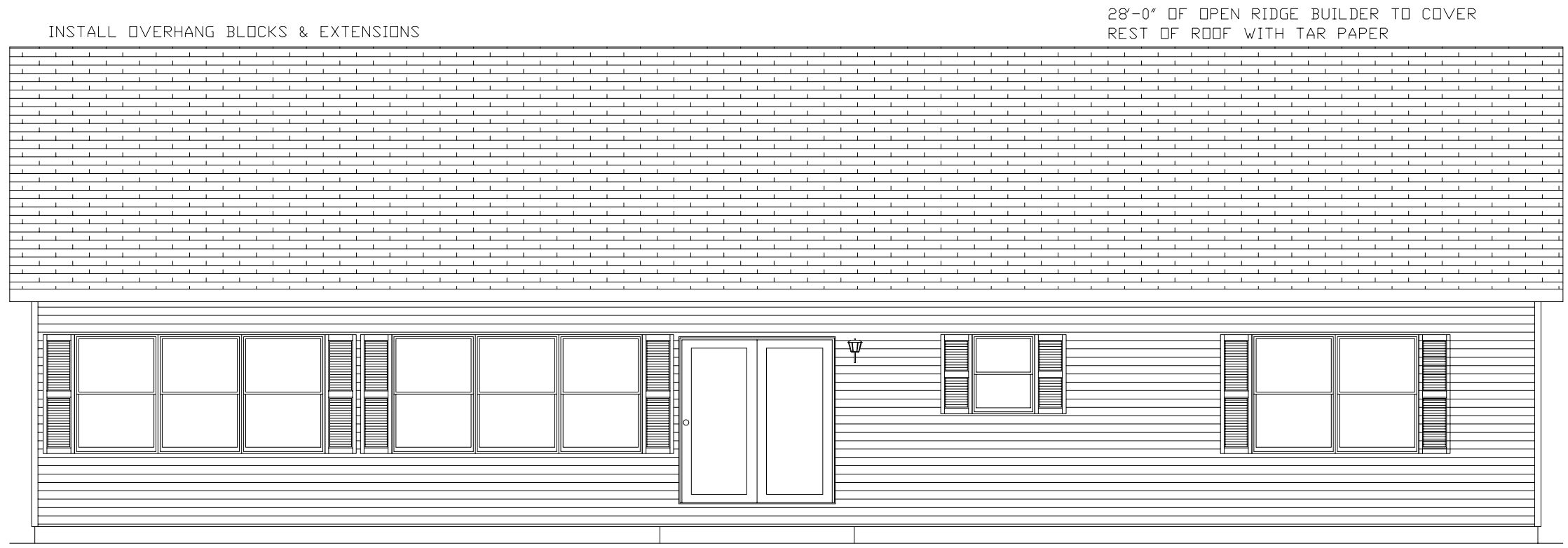


TO THE BEST OF MY KNOWLEDGE, BELIEF, AND PROFESSIONAL JUDGEMENT, THESE PLANS (AND SPECIFICATIONS) ARE IN COMPLIANCE WITH THE E.C.C.C.N.Y.S., 2002 EDITION. COMPLIANCE IS DETERMINED BY THE USE OF MECHECK, COMPUTER SOFTWARE DEVELOPED BY DOE, AND CONFORMANCE TO THE GENERAL PROVISIONS OF CHAPTER 5, SECTIONS 502, 503, 504, 505. INDIVIDUAL (DISCRETE) MODEL PLANS DERIVED FROM THE SYSTEM AND SUBMITTED TO THE LOCAL CODE ENFORCEMENT OFFICIAL IN THE CONNECTION WITH BUILDING PERMIT APPLICATION SHALL BE ACCOMPLISHED BY A MECHECK REPORT.

"THE PLANS AND PERMIT SET ARE DERIVED FROM AND CONSISTENT WITH THE PLANS AND SPECIFICATIONS ASSOCIATED WITH THIS APPROVAL ON FILE WITH THE DIVISION AND THIS CONDITIONAL APPROVAL LETTER."



SEISMIC DESIGN: CLASS B

BUILDER		CUSTOMER	
CITY	COUNTY	STATE	
FULTON	OSWEGO	WHITING	
WIND SPEED	WIND LOAD	SNOW LOAD	
90 3SEC GUST	SEE CALCS	MAN	55
ORDER NO.	SERIAL NO.	FILE NO.	
21905	10465	P21905(150)	

3260 - RANCH
FRONT ELEVATION

72 EAST MARKET STREET
P.O. BOX 219
MIDDLEBURG, PA. 17842
PHONE: (570) 837-1424
FAX: (570) 837-6133

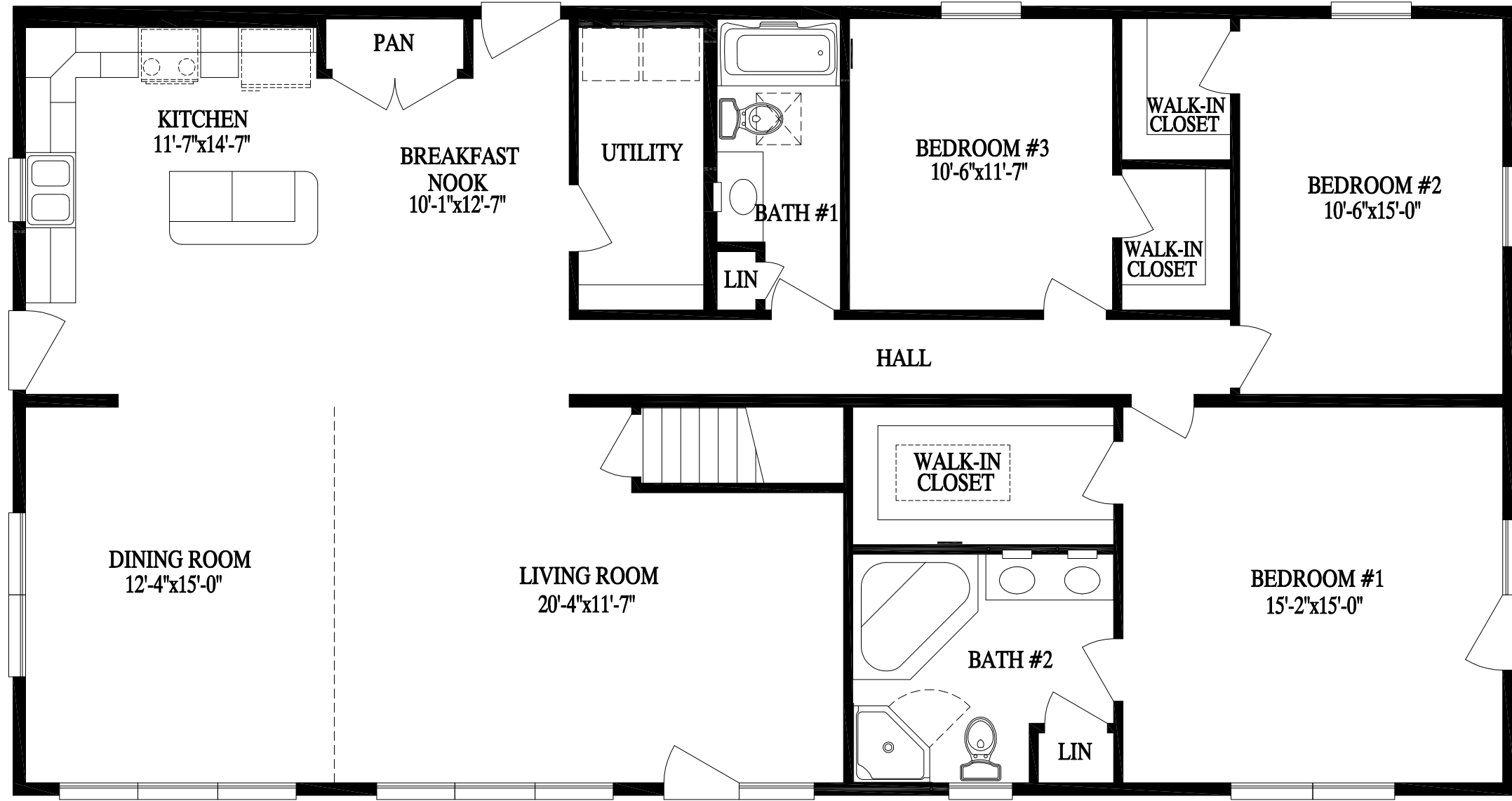
PROFESSIONAL BUILDING SYSTEMS, INC.

DATE:	DRAWN BY:	STATUS:
2/20/2006	HMS	PRELIM
3/9/2006	HMS	FINAL
03/17/06	BSG	APPROVAL
4/11/06	BJH	P.A.
4/20/06	HLB	PURCHASING
6/12/2006	PSS	PRODUCTION

THIS PRINT HAS BEEN EXTRACTED FROM A SET OF A PREVIOUSLY APPROVED SYSTEM OR A MODEL APPROVAL AND IS ON FILE WITH STATE AND IS OK TO BE BUILT

TO THE BEST OF MY KNOWLEDGE, BELIEF, AND PROFESSIONAL JUDGEMENT, THESE PLANS (AND SPECIFICATIONS) ARE IN COMPLIANCE WITH THE E.C.C.C.N.Y.S., 2002 EDITION. COMPLIANCE IS DETERMINED BY THE USE OF MECHECK, COMPUTER SOFTWARE DEVELOPED BY DOE, AND CONFORMANCE TO THE GENERAL PROVISIONS OF CHAPTER 5, SECTIONS 502, 503, 504, 505. INDIVIDUAL (DISCRETE) MODEL PLANS DERIVED FROM THE SYSTEM AND SUBMITTED TO THE LOCAL CODE ENFORCEMENT OFFICIAL IN THE CONNECTION WITH BUILDING PERMIT APPLICATION SHALL BE ACCOMPLISHED BY A MECHECK REPORT.

"THE PLANS AND PERMIT SET ARE DERIVED FROM AND CONSISTENT WITH THE PLANS AND SPECIFICATIONS ASSOCIATED WITH THIS APPROVAL ON FILE WITH THE DIVISION AND THIS CONDITIONAL APPROVAL LETTER."



SEISMIC DESIGN: CLASS B

DATE:	2/20/2006	DRAWN BY:	HMS	STATUS:	PRELIM
	3/9/2006		HMS		FINAL
	03/17/06		BSG		APPROVAL
	4/11/06		BJH		P.A.
	4/20/06		HLB		PURCHASING
	6/12/2006		PSS		PRODUCTION
PROFESSIONAL BUILDING SYSTEMS, INC. 72 EAST MARKET STREET P.O. BOX 219 MIDDLEBURG, PA. 17842 PHONE: (570) 837-1424 FAX: (570) 837-6133					
3260 - RANCH		3260 - RANCH		3260 - RANCH	
BUILDER CITY: FULTON COUNTY: OSWEGO WIND SPEED: 90 3SEC GUST: SEE CALCS ORDER NO.: 21905 SERIAL NO.: 10465 FILE NO.: P21905(150)		FURDI'S COUNTY: OSWEGO WIND LOAD: SEE CALCS MAN		CUSTOMER: WHITING STATE: NY SNOW LOAD: 55	

THIS PRINT HAS BEEN EXTRACTED FROM A SET OF A PREVIOUSLY APPROVED SYSTEM OR A MODEL APPROVAL AND IS ON FILE WITH STATE AND IS OK TO BE BUILT