

FLOOR

CEILING

FLOOR

CEILING



THIS PRINT HAS BEEN EXTRACTED FROM A SET OF A PREVIOUSLY APPROVED SYSTEM OR A MODEL APPROVAL AND IS ON FILE WITH STATE AND IS OK TO BE BUILT

TO THE BEST OF MY KNOWLEDGE, BELIEF, AND PROFESSIONAL JUDGEMENT, THESE PLANS (AND SPECIFICATIONS) ARE IN COMPLIANCE WITH THE E.C.C.N.Y.S., 2002 EDITION. COMPLIANCE IS DETERMINED BY THE USE OF MECHECK, COMPUTER SOFTWARE DEVELOPED BY DOE, AND CONFORMANCE AND THE GENERAL PROVISIONS OF CHAPTER 202, SECTIONS 202.01, 202.02, 202.03, 202.04, 202.05, 202.06, 202.07, 202.08, 202.09, 202.10, 202.11, 202.12, 202.13, 202.14, 202.15, 202.16, 202.17, 202.18, 202.19, 202.20, 202.21, 202.22, 202.23, 202.24, 202.25, 202.26, 202.27, 202.28, 202.29, 202.30, 202.31, 202.32, 202.33, 202.34, 202.35, 202.36, 202.37, 202.38, 202.39, 202.40, 202.41, 202.42, 202.43, 202.44, 202.45, 202.46, 202.47, 202.48, 202.49, 202.50, 202.51, 202.52, 202.53, 202.54, 202.55, 202.56, 202.57, 202.58, 202.59, 202.60, 202.61, 202.62, 202.63, 202.64, 202.65, 202.66, 202.67, 202.68, 202.69, 202.70, 202.71, 202.72, 202.73, 202.74, 202.75, 202.76, 202.77, 202.78, 202.79, 202.80, 202.81, 202.82, 202.83, 202.84, 202.85, 202.86, 202.87, 202.88, 202.89, 202.90, 202.91, 202.92, 202.93, 202.94, 202.95, 202.96, 202.97, 202.98, 202.99, 202.100.

"THE PLANS AND PERMIT SET ARE DERIVED FROM AND CONSISTENT WITH THE PLANS AND SPECIFICATIONS ASSOCIATED WITH THIS APPROVAL ON FILE WITH THE DIVISION AND THIS CONDITIONAL APPROVAL LETTER."

FLOOR

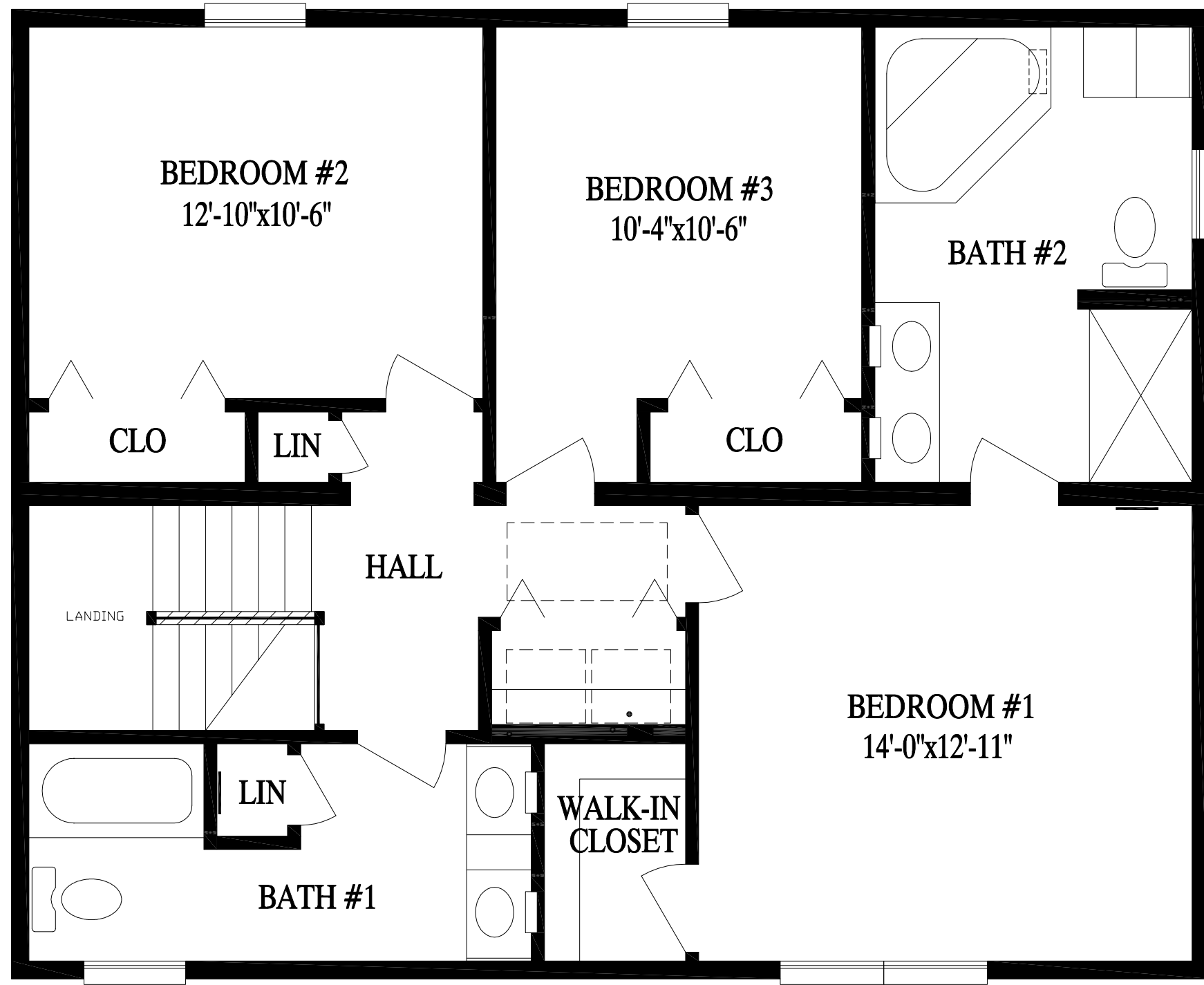
|       |           |           |     |         |            |
|-------|-----------|-----------|-----|---------|------------|
| DATE: | 10/28/03  | DRAWN BY: | ALA | STATUS: | PRELIM     |
|       | 2/15/2005 |           | PIB |         | FINAL      |
|       | 4/26/05   |           | ALA |         | APPROVAL   |
|       | 4/28/05   |           | HLB |         | P.A.       |
|       | 6/1/05    |           | HLB |         | PURCHASING |
|       |           |           | NLA |         | PRODUCTION |

2834 - TWO STORY  
FRONT ELEVATION

**PROFESSIONAL BUILDING SYSTEMS, INC.**  
72 EAST MARKET STREET  
P.O. BOX 219  
MIDDLEBURG, PA. 17842  
PHONE: (570) 837-1424  
FAX: (570) 837-6133

|            |         |               |             |
|------------|---------|---------------|-------------|
| BUILDER    | FURDI'S | CUSTOMER      | SLIGHT      |
| CITY       | OSWEGO  | STATE         | NY          |
| COUNTY     | OSWEGO  | SNOW LOAD     | 55          |
| WIND SPEED | 90      | SEE CALS MAN. |             |
| ORDER NO.  | 13551   | FILE NO.      | P13551(750) |
| SERIAL NO. | 9786    |               |             |





TO THE BEST OF MY KNOWLEDGE, BELIEF, AND PROFESSIONAL JUDGEMENT, THESE PLANS (AND SPECIFICATIONS) ARE IN COMPLIANCE WITH THE E.C.C.N.Y.S., 2002 EDITION. COMPLIANCE IS DETERMINED BY THE USE OF MECHECK, COMPUTER SOFTWARE DEVELOPED BY DOE, AND CONFORMANCE TO THE GENERAL PROVISIONS OF CHAPTER 5, SECTIONS 502, 503, 504, 505. INDIVIDUAL (DISCRETE) MODEL PLANS DERIVED FROM THE SYSTEM AND SUBMITTED TO THE LOCAL CODE ENFORCEMENT OFFICIAL IN THE CONNECTION WITH BUILDING PERMIT APPLICATION SHALL BE ACCOMPLISHED BY A MECHECK REPORT.

"THE PLANS AND PERMIT SET ARE DERIVED FROM AND CONSISTENT WITH THE PLANS AND SPECIFICATIONS ASSOCIATED WITH THIS APPROVAL ON FILE WITH THE DIVISION AND THIS CONDITIONAL APPROVAL LETTER."

THIS PRINT HAS BEEN EXTRACTED FROM A SET OF A PREVIOUSLY APPROVED SYSTEM OR A MODEL APPROVAL AND IS ON FILE WITH STATE AND IS OK TO BE BUILT

X \_\_\_\_\_

|       |           |           |            |                  |  |  |  |            |         |             |
|-------|-----------|-----------|------------|------------------|--|--|--|------------|---------|-------------|
| PAGE: | DATE:     | DRAWN BY: | STATUS:    | 2834 - TWO STORY |  |  |  | BUILDER    | FURDI'S | CUSTOMER    |
|       | 10/28/03  | ALA       | PRELIM     |                  |  |  |  | CITY       | SLIGHT  |             |
|       | 2/15/2005 | PIB       | FINAL      |                  |  |  |  | COUNTY     | OSWEGO  | STATE       |
|       | 4/26/05   | ALA       | APPROVAL   |                  |  |  |  | CITY       | OSWEGO  | STATE       |
|       | 4/28/05   | HLB       | P.A.       |                  |  |  |  | WIND SPEED | 90      | SNOW LOAD   |
|       | 6/1/05    | HLB       | PURCHASING |                  |  |  |  | SEC GUST   | 3       | 55          |
|       |           | NLA       | PRODUCTION |                  |  |  |  | ORDER NO.  | 13551   | FILE NO.    |
|       |           |           |            |                  |  |  |  | SERIAL NO. | 9786    | P13551(750) |

**P**ROFESSIONAL  
**B**UILDING  
**S**YSTEMS, INC.

72 EAST MARKET STREET  
P.O. BOX 219  
MIDDLEBURG, PA. 17842  
PHONE: (570) 837-1424  
FAX: (570) 837-6133